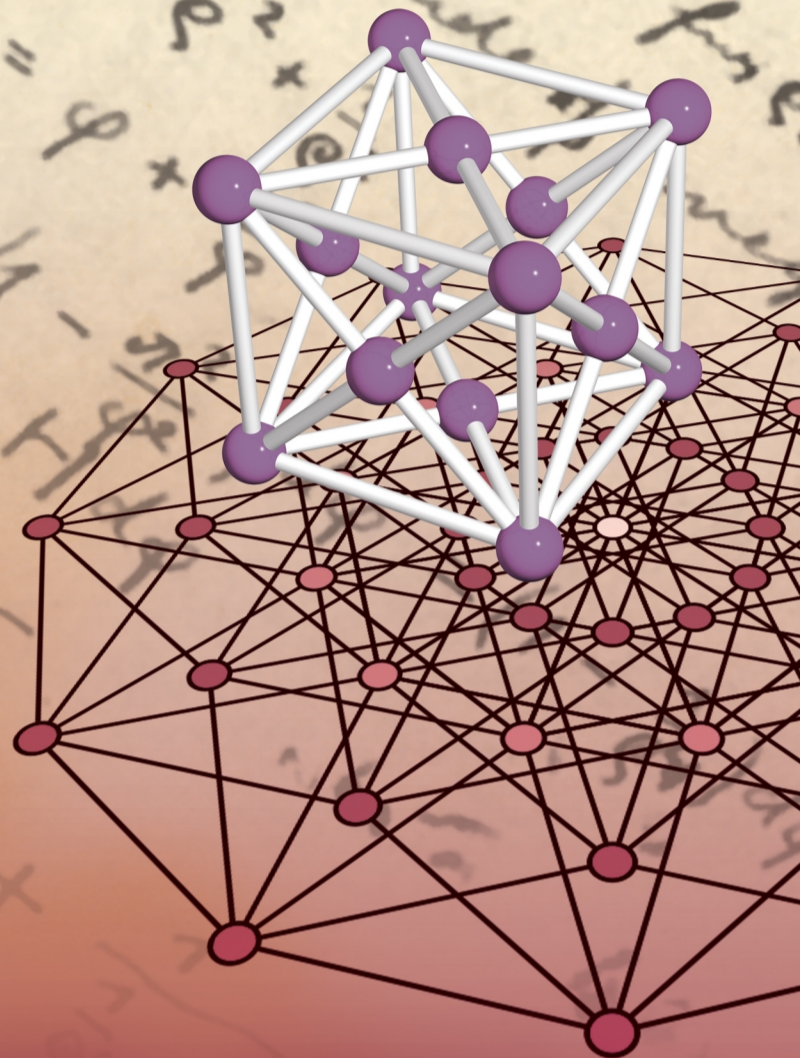
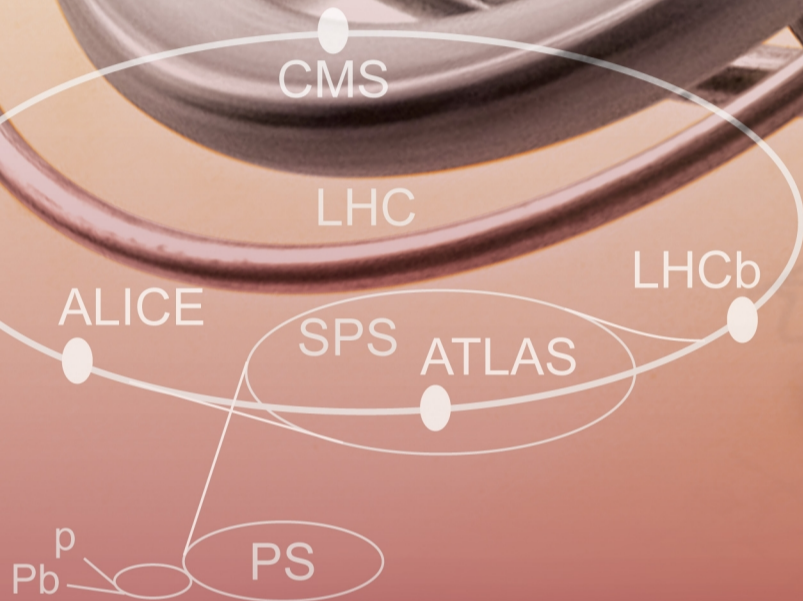
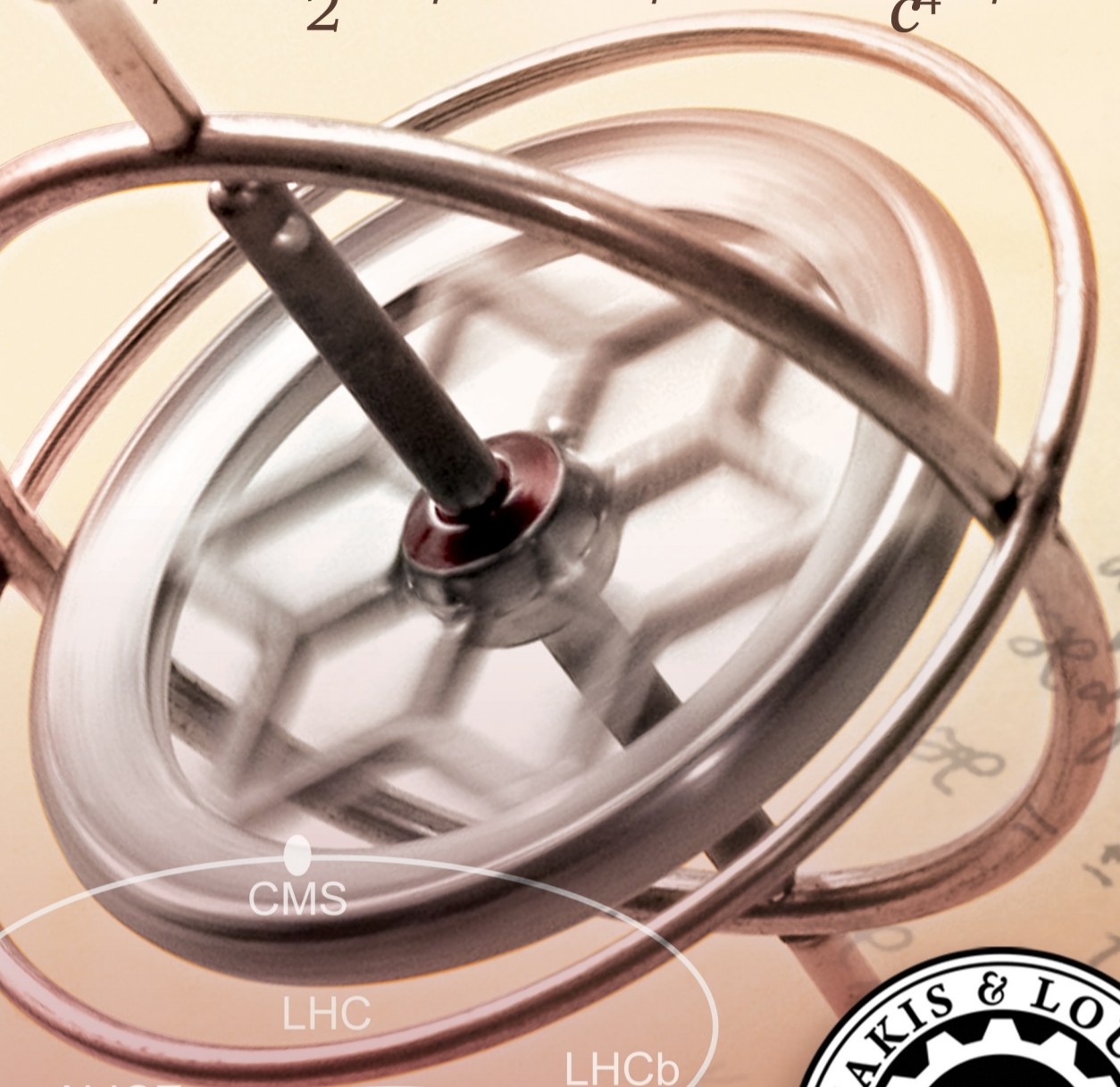


$$R_{\mu\nu} - \frac{1}{2}Rg_{\mu\nu} + \Lambda g_{\mu\nu} = 8\pi\frac{G}{c^4}T_{\mu\nu}$$



# **NEMITSAS PRIZE 2013 FOR PHYSICS**

**TO SCIENTISTS OF CYPRIOT ORIGIN  
OCTOBER 2013 – NICOSIA CYPRUS  
MONETARY AWARD €50.000**

**Applications or nominations accepted until 30th April 2013  
For further information and the application form  
please visit our website**

**[www.nemitsasfoundation.org](http://www.nemitsasfoundation.org)**

159 Leontiou A' Str., Maryvonne Building, Office 104, 3022 Limassol, Cyprus

P.O.Box 50124, 3601 Limassol, Cyprus

Tel. 00357 25 569222, Fax 00357 25 569275

Email [foundation@nemitsas.org](mailto:foundation@nemitsas.org)